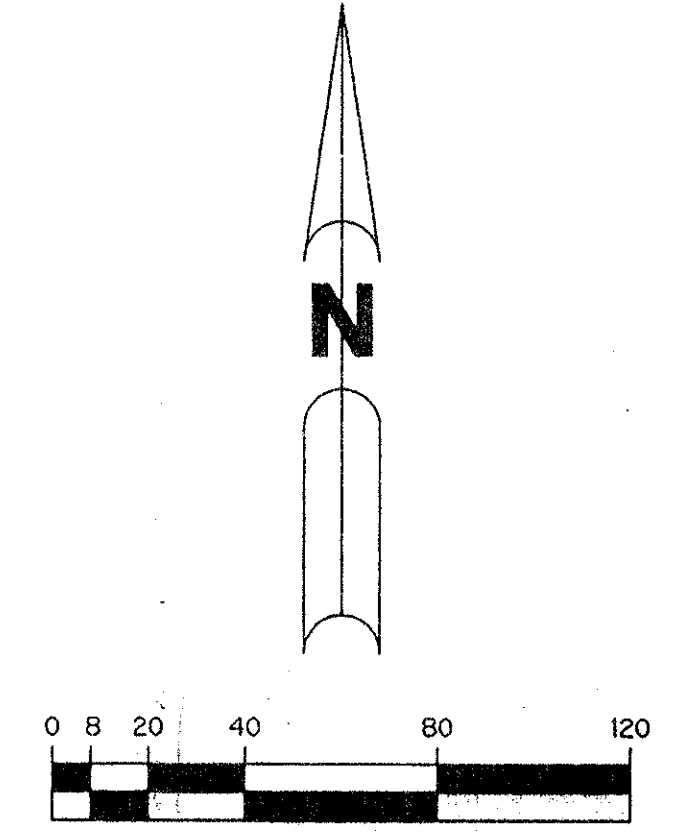


# REGENCY LAKE ESTATES

BEING A REPLAT OF A PORTION OF TRACTS 1, 2, 3, 12, 13, 14, 15, 16, AND 17 AND ASSOCIATED ABANDONED RIGHT-OF-WAY ALL IN BLOCK 27 ACCORDING TO THE PLAT OF PALM BEACH FARMS CO. PLAT NO. 3, AS RECORDED IN PLAT BOOK 2, PAGE 45, PUBLIC RECORDS OF PALM BEACH COUNTY, FLORIDA, LYING IN SECTION 30, TOWNSHIP 44 SOUTH, RANGE 42 EAST.

SHEET 5 OF 7 SEPTEMBER, 1994

PET. 94-4  
CURRENT  
5/2/2/I



SCALE: 1" = 40'

OVERALL  
KENT PUD

P.B.F.C. CO. PLAT No. 3

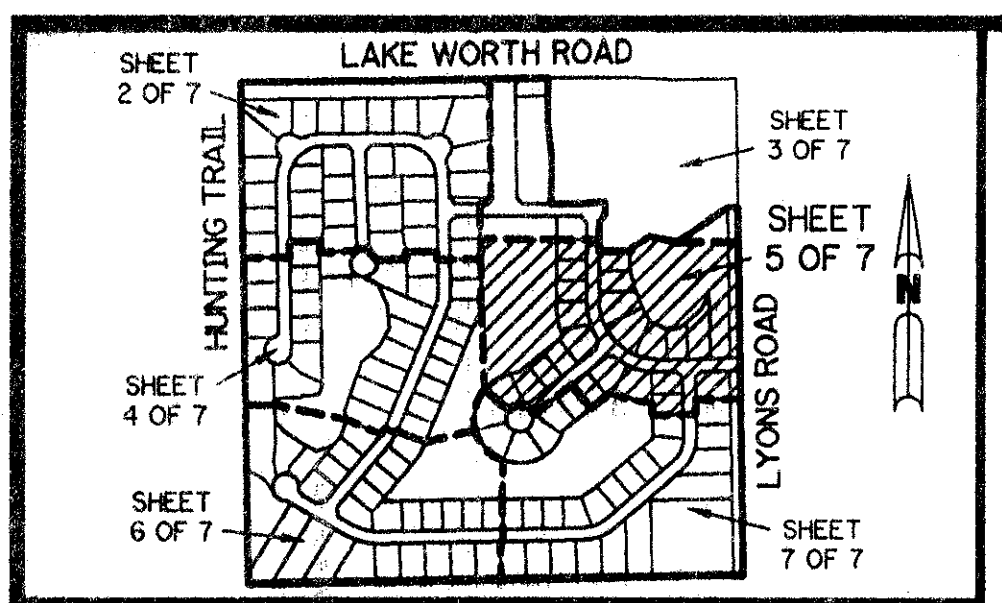
### LEGEND:

- - PERMANENT REFERENCE MONUMENT, PLS #4213
- ▲ - PERMANENT CONTROL POINT, PLS #4213
- Δ - DELTA ANGLE
- A - ARC LENGTH
- B.E. - BUFFER EASEMENT
- D.E. - DRAINAGE EASEMENT
- FPL - FLORIDA POWER & LIGHT COMPANY
- L.M.A.E. - LAKE MAINTENANCE ACCESS EASEMENT
- L.M.E. - LAKE MAINTENANCE EASEMENT
- L.W.D.D. - LAKE WORTH DRAINAGE DISTRICT
- N.R. - NOT RADIAL
- N.T.S. - NOT TO SCALE
- O.R.B. - OFFICIAL RECORD BOOK
- P.B. - PLAT BOOK
- P.B.F.C. - BLOCK 27, PALM BEACH FARMS CO. PLAT NO. 3 (PLAT BOOK 2, PAGE 45)
- PGS. - PAGES
- P.L.S. - PROFESSIONAL LAND SURVEYOR
- R - RADIUS
- R/W - RIGHT-OF-WAY
- U.E. - UTILITY EASEMENT
- C.B. - CHORD BEARING
- S.T. - SURVEY TIE LINE

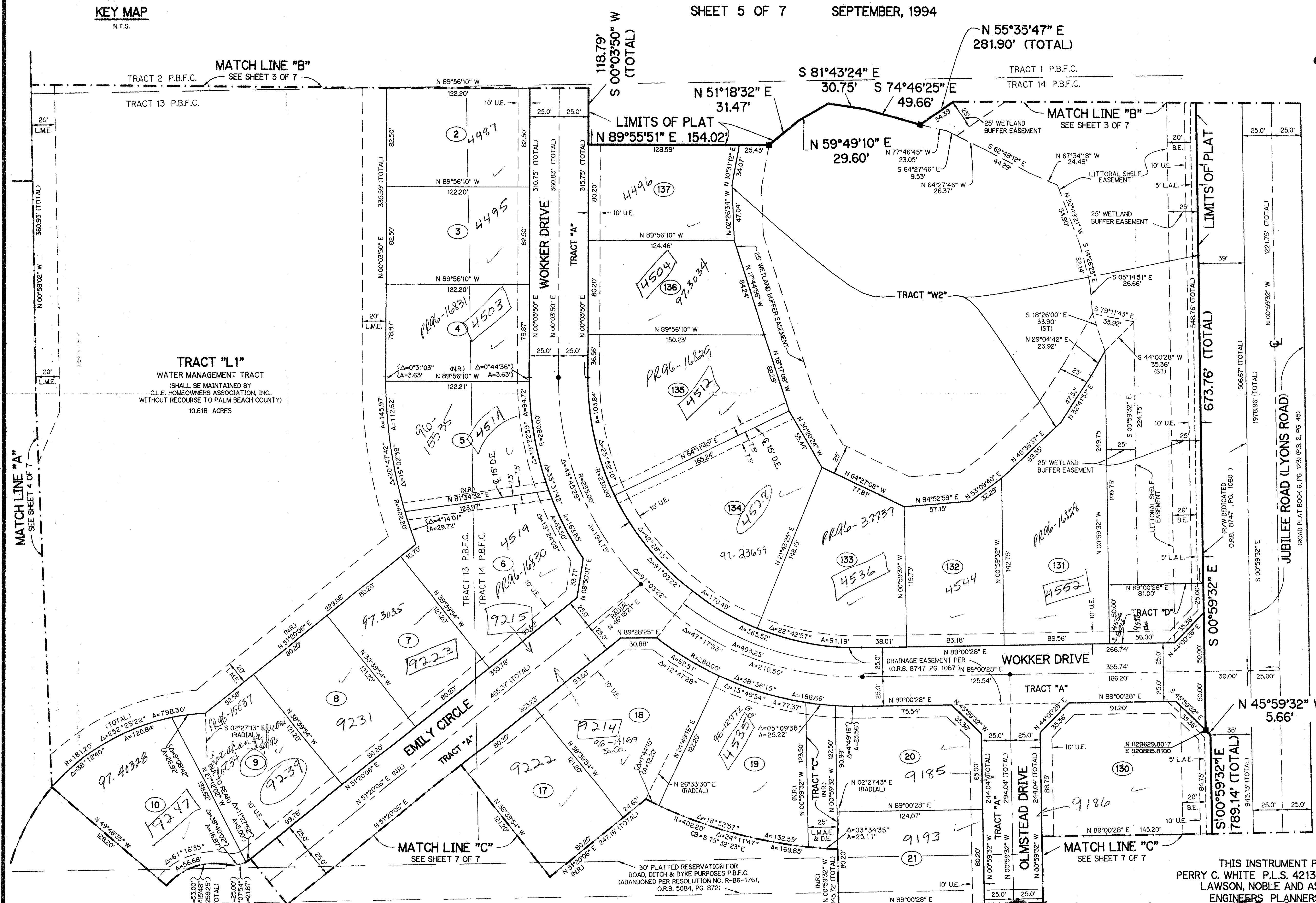
75 104

SUBDIVISION - Regency Lake Estates  
 BOOK 75 PAGE 104  
 FLOOD ZONE B FLOOD MAP # 1704  
 QUAD # 48 ZONING PUD  
 SE 94-04  
 PUD NAME Sublot 30/44/42

TAR-738



KEY MAP  
N.T.S.



30' PLATTED RESERVATION FOR ROAD, DITCH & DYKE PURPOSES P.B.F.C. (ABANDONED PER RESOLUTION NO. R-86-1761, O.R.B. 5084, PG. 872)

THIS INSTRUMENT PREPARED BY  
PERRY C. WHITE P.L.S. 4213 STATE OF FLORIDA  
LAWSON, NOBLE AND ASSOCIATES, INC.  
ENGINEERS PLANNERS SURVEYORS  
P.O. BOX 1000  
WEST PALM BEACH, FLORIDA